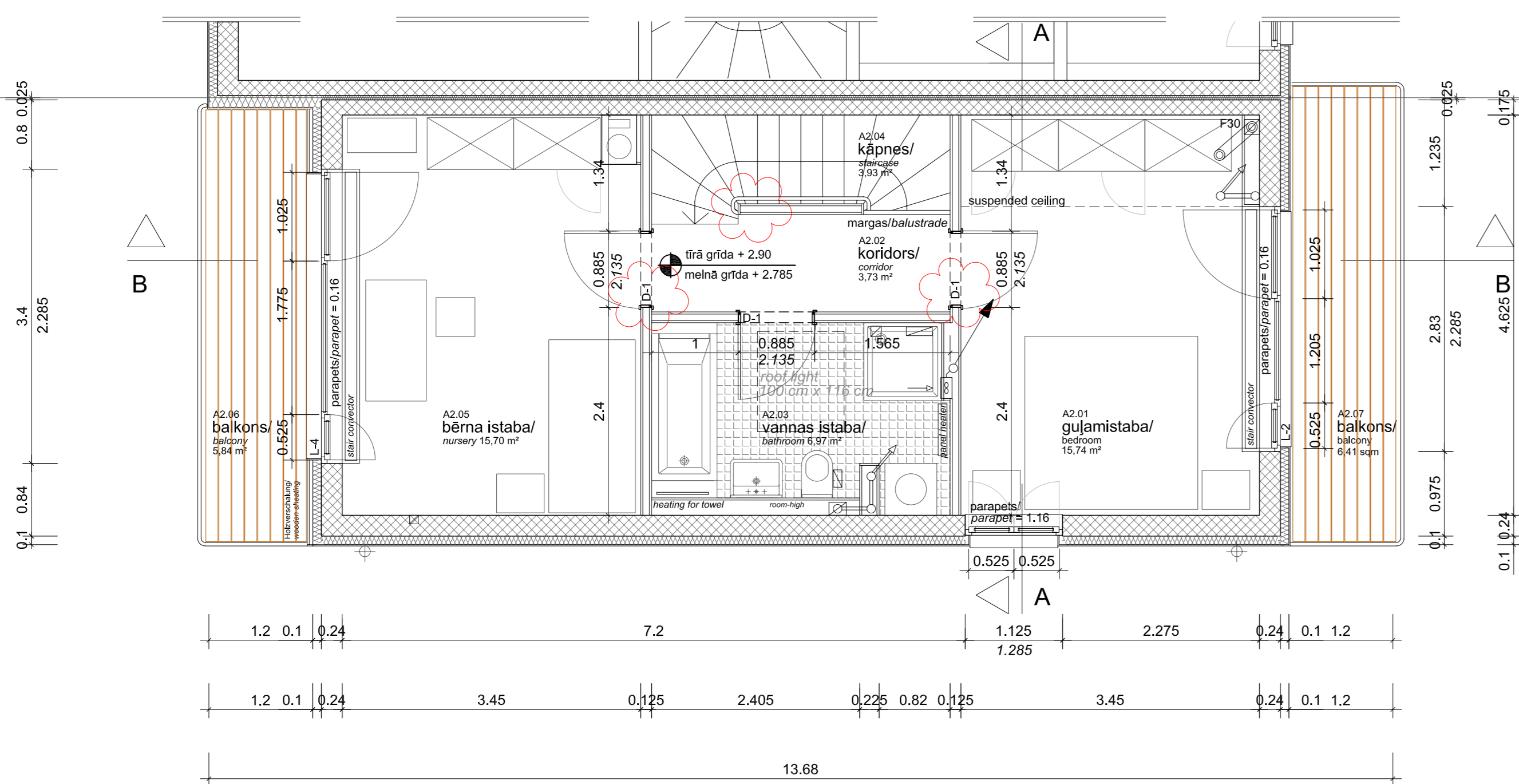
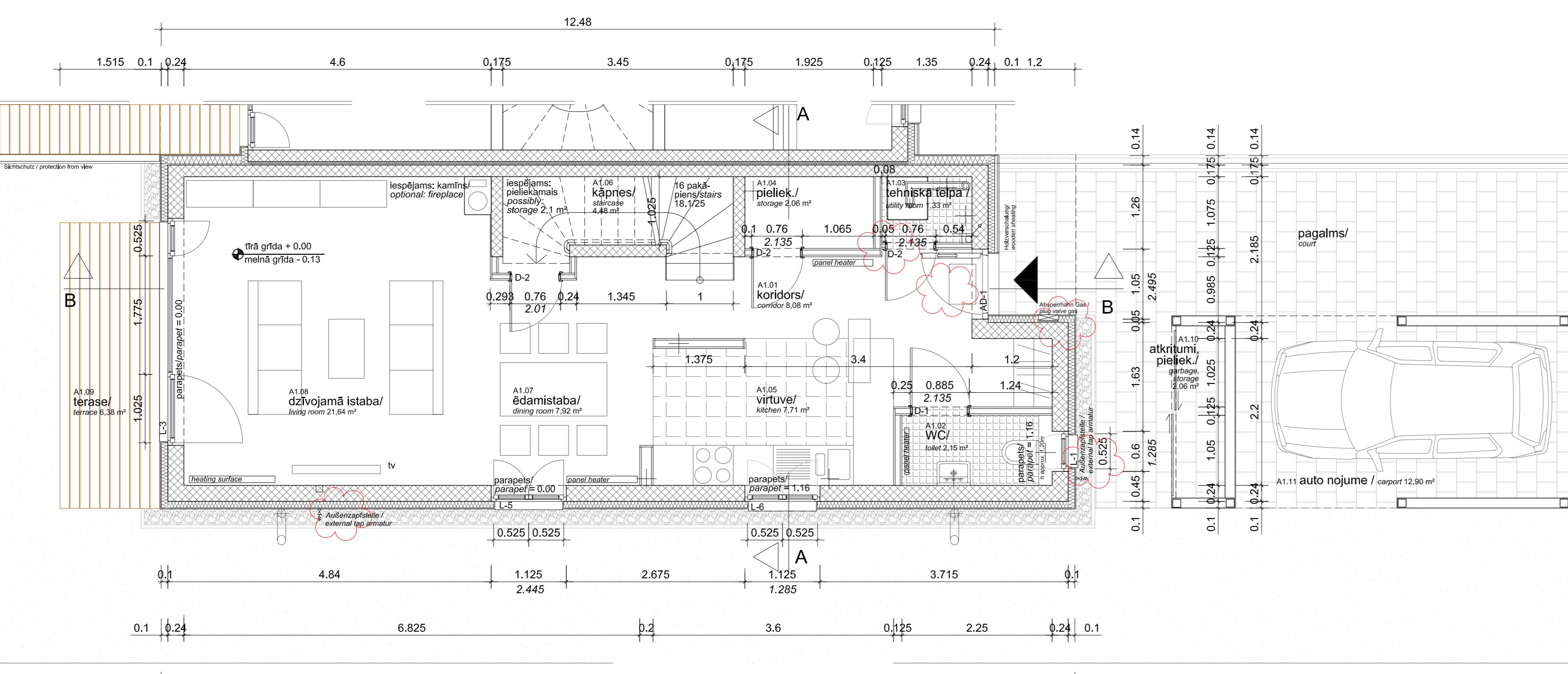


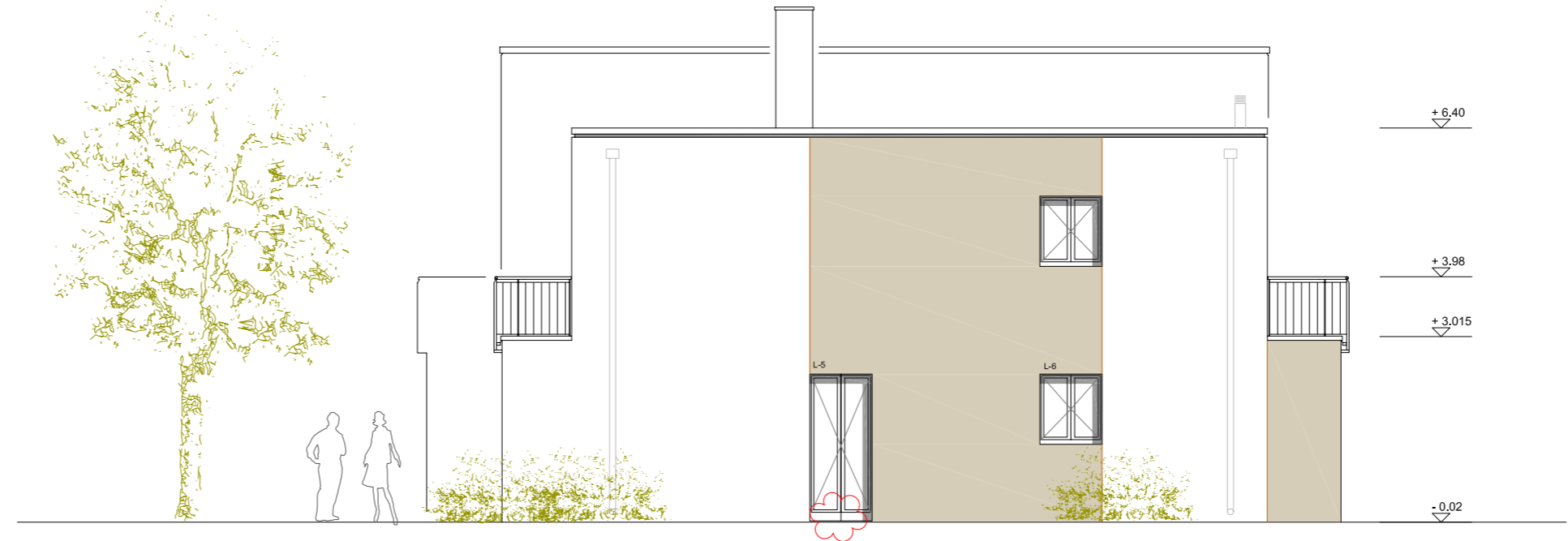
top view s. 1:50



first floor s. 1:50



ground floor s. 1:50



side facade s. 1:100



street facade s. 1:100



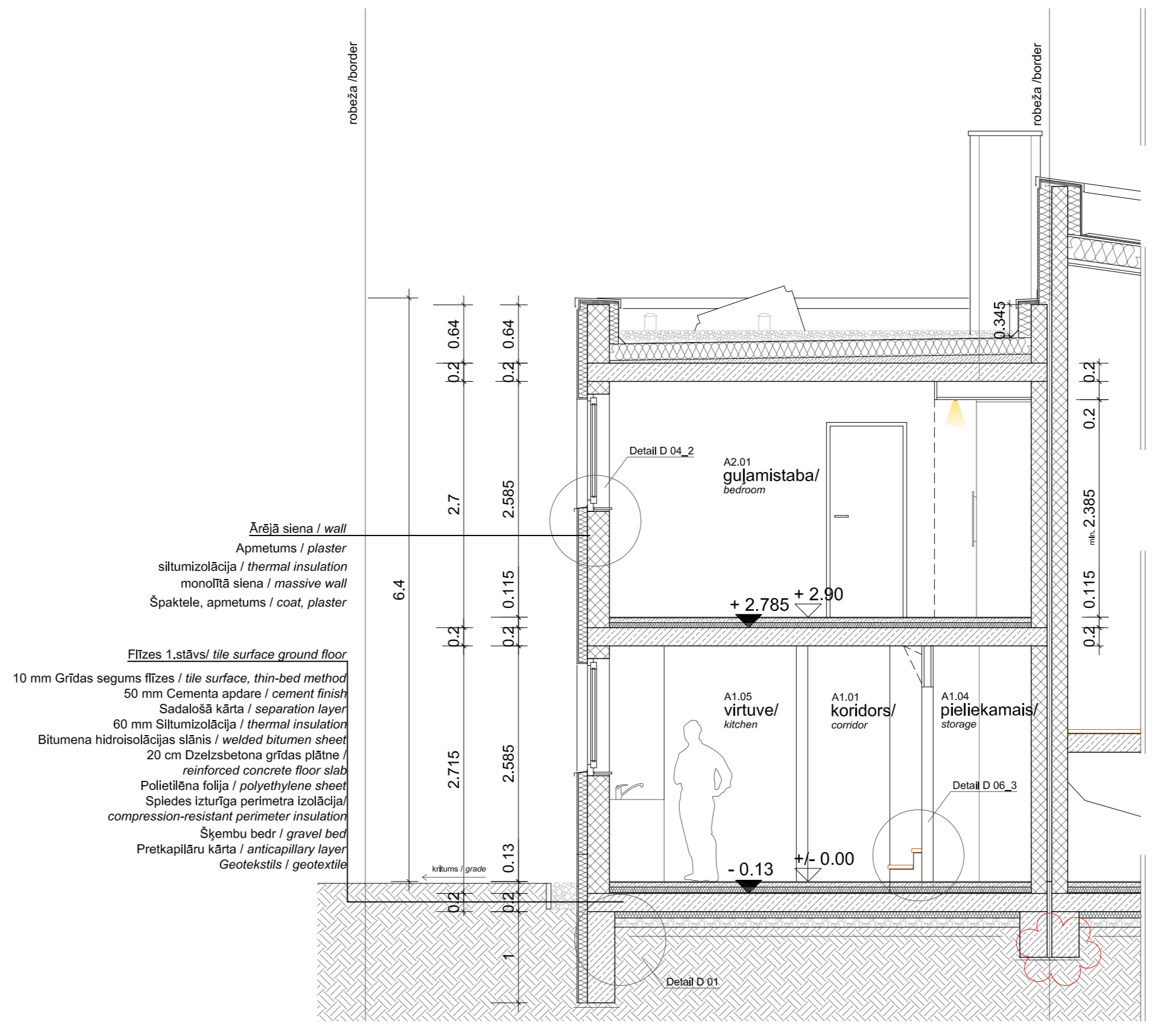
street facade with carport s. 1:100



garden facade s. 1:100



longitudinal section s. 1:50



cross section s. 1:50

1.stāva: eksplīkācija/ground floor

nr./no.	telpas nosaukums/room	platība m ² /surface m ²
A1.01	koridors/corridor	8,08 m ²
A1.02	WC/toilet	2,15 m ²
A1.03	tehniskā telpa/utility room	1,33 m ²
A1.04	pieliekamais/storage	2,06 m ²
A1.05	virtuve/kitchen	7,71 m ²
A1.06	kāpnes/staircase	4,48 m ²
A1.07	ēdamistaba/dining room	7,92 m ²
A1.08	dzīvojamā istaba/living room	21,64 m ²
kopā/total		55,37 m ²

2.stāva: eksplīkācija/first floor

nr./no.	telpas nosaukums/room	platība m ² /surface m ²
A2.01	guļamistaba/bedroom	15,74 m ²
A2.02	koridors/corridor	3,73 m ²
A2.03	vannas istaba/bathroom	6,97 m ²
A2.04	kāpnes/staircase	3,93 m ²
A2.05	bērnu istaba/nursery	15,70 m ²
kopā/total		46,08 m ²

kopā platība/total area

1.stāva/ground floor	55,37 m ²
2.stāva/first floor	46,08 m ²
kopā/total	101,45 m²

nr./no.	telpas nosaukums/room	platība m ² /surface m ²
A1.09	terase/terrace	6,38 m ²
A1.10	atkritumi, pieliekamais/garbage, storage	2,06 m ²
A1.11	auto nojume/carport	12,90 m ²
A2.06	balkons/balcony	5,84 m ²
A2.07	balkons/balcony	6,41 m ²

Anmerkung:
 - alle Maßangaben als Rohmaße
 - BRH Angaben und Türhöhen ab OK FFB
 - Fertigteile gemäß Planung H+L vom 30.07.2007

annotation:
 - all measures as rough dimensions
 - parapets and heights of doors from finished floor level
 - prefabricated elements according to planning of H+L from 2007/07/30

Datum/date	Änderung/modification	Index
23.05.07 (A1)	floor plans: adjustment window sizes and parapets, insulation, outside facilities	a
18.07.07 (A2)	floor plans: dimensions windows, alteration front door	a
23.07.07 (A3)	floor plans: heaters sections: depth of frost apron	a
13.08.07 (B)	modification according to final planning of prefabricated elements	b
16.10.07 (C1)	modification of utility rooms	b
22.10.07 (C2)	position of roof penetration	b
26.10.07 (C3)	door to storage below staircase	c
23.11.07 (C)	summary of modifications, external baggage, door details, bathrooms, roof slope, modification of window and door sills according to shop drawings by CWS	c

Silaraji Row Houses **INDEX c**

Bauherr/building owner	Architekt/designer
Datum/date	Sheet & Partner SIA Datum/date



Projekt/project	Silaraji Row Houses	Plan Nr./plan no.	FP 01
Maßstab/scale	1:50/ 1:100	Plan/plan	House A
Phase/phase	Ausführungsplanung/ final planning	Datum/date	23.11.2007