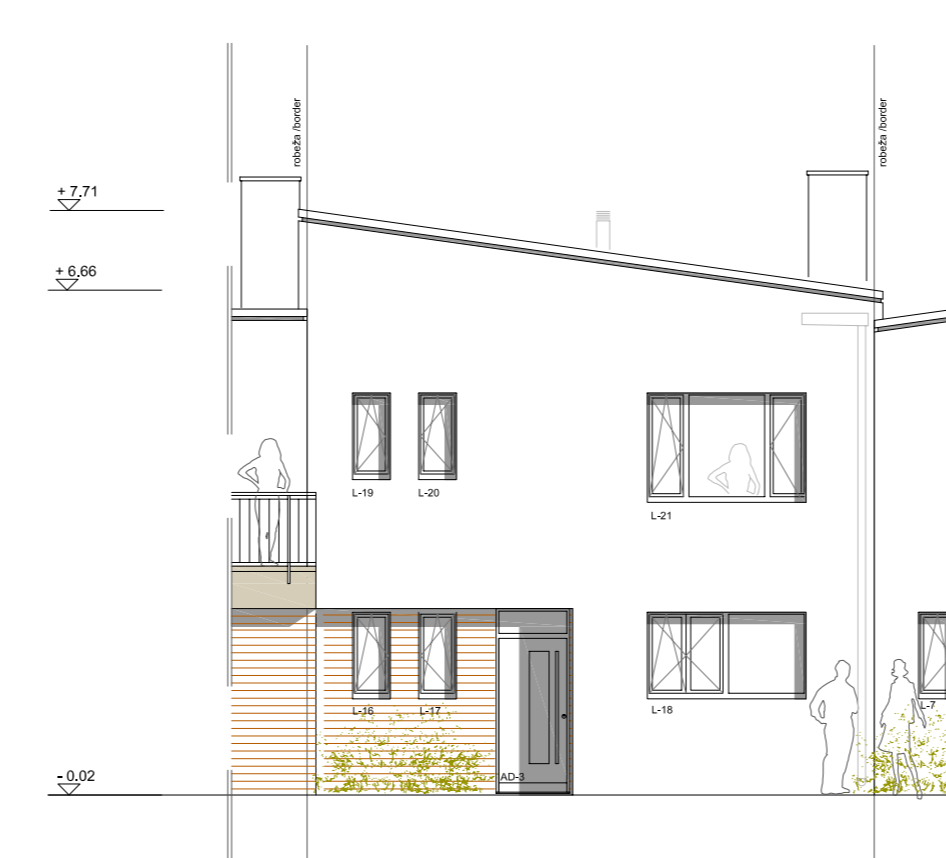
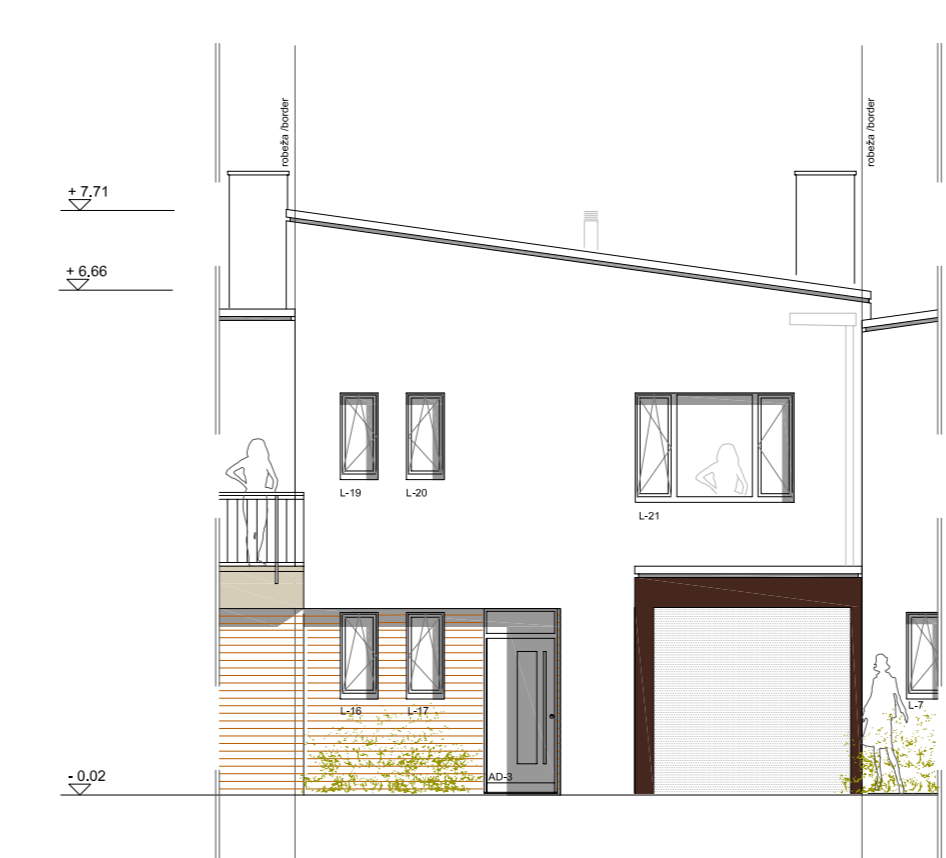


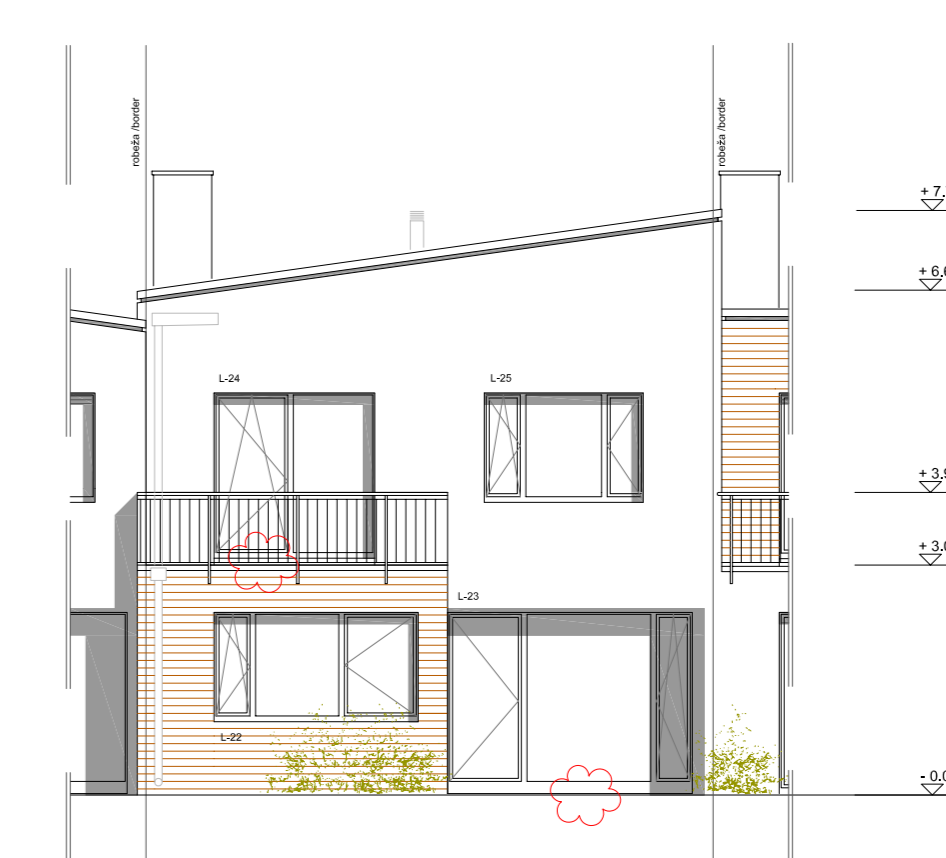
top view s. 1:50



street facade s. 1:100



street facade with carport s. 1:100



garden facade s. 1:100

1.stāva: eksplīkācija/ground floor

nr./no.	telpas nosaukums/room	platība m²/area m²
C1.01	koridors/corridor	6,57 m²
C1.02	WC/toilet	1,57 m²
C1.03	tehnikā telpa/utility	0,89 m²
C1.04	virtuve/kitchen	10,83 m²
C1.05	piellekamais/storage	3,77 m²
C1.06	kāpnes/staircase	4,93 sqm
C1.07	ēdamistaba/dining room	14,17 m²
C1.08	dzīvojamā istaba/living room	20,47 m²
C1.09	kabinets/working space	12,47 m²
kopā/total		75,67 m²

2.stāva: eksplīkācija/first floor

nr./no.	telpas nosaukums/room	platība m²/area m²
C2.01	gulamistaba/bedroom	15,72 m²
C2.02	piets, pieliekamais/sauna, stor.	3,13 m²
C2.03	vannas istaba/bathroom	5,56 m²
C2.04	vannas istaba/bathroom	3,96 m²
C2.05	koridors/corridor	7,07 m²
C2.06	kāpnes/staircase	4,99 m²
C2.07	bērnu istaba/nursery	15,80 m²
C2.08	bērnu istaba/nursery	16,39 m²
kopā/total		72,62 m²

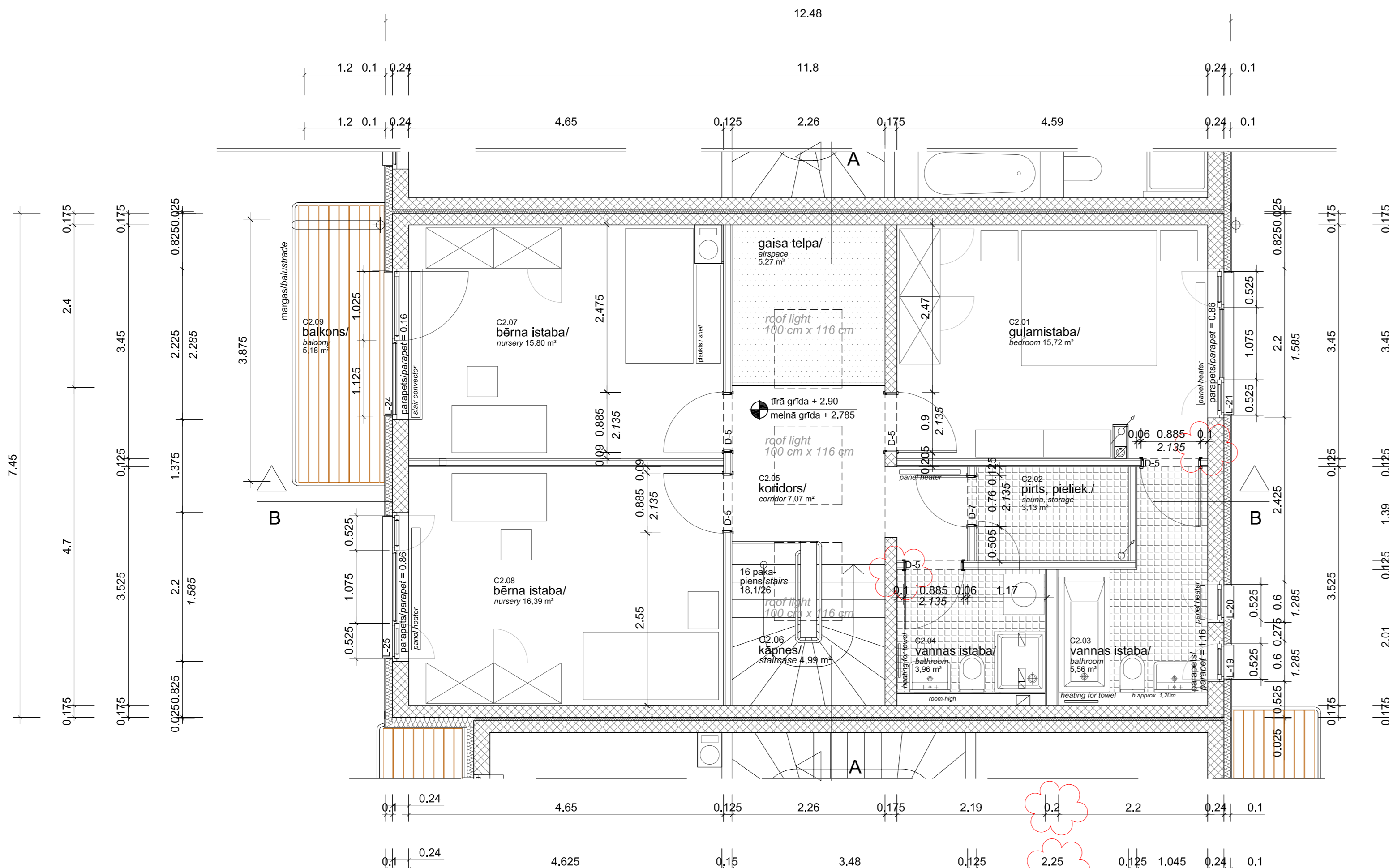
kopā platība/total area

1.stāva/ground floor	75,67 m²
2.stāva/first floor	72,62 m²
kopā/total	148,29 m²

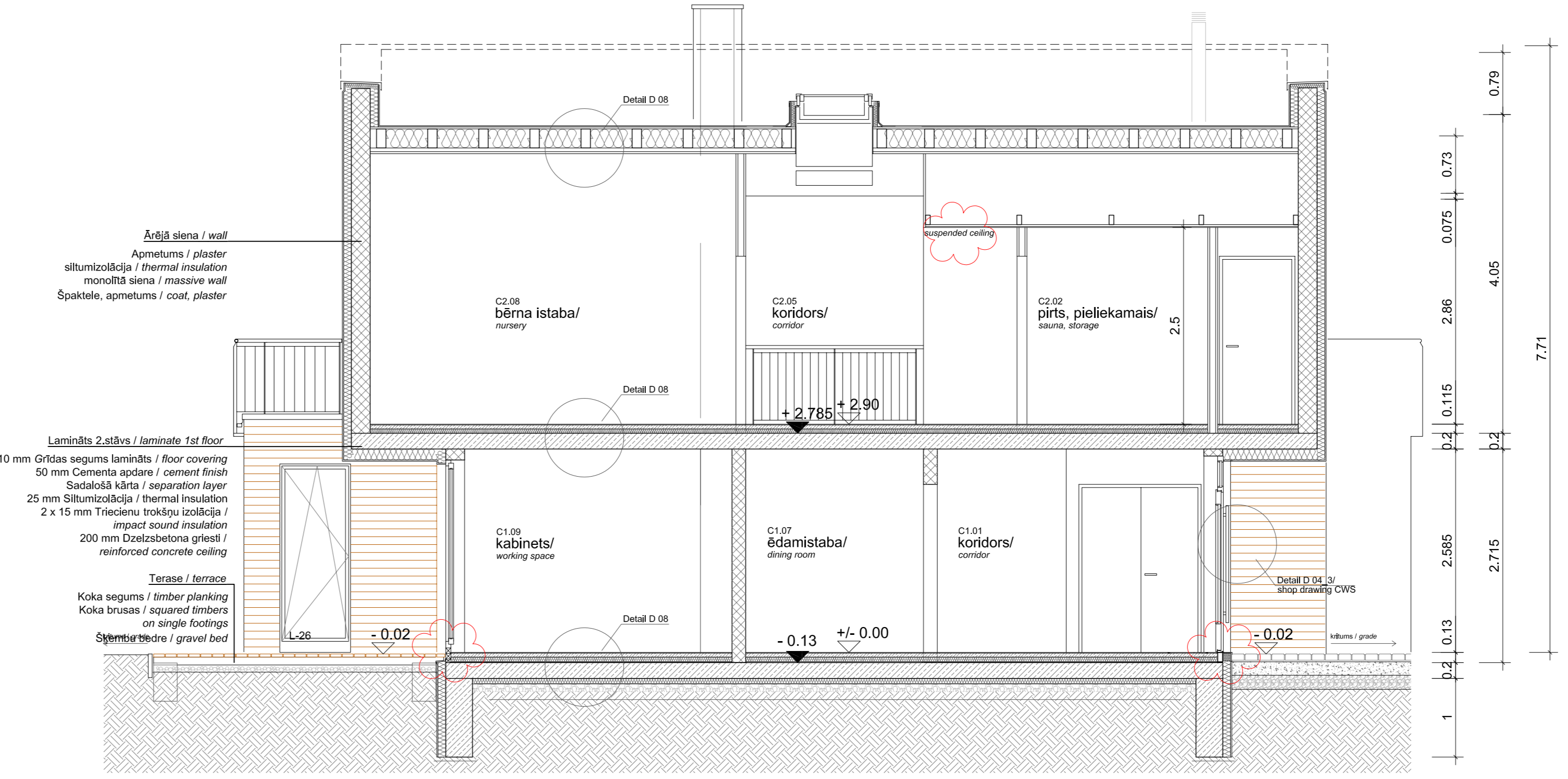
nr./no.	telpas nosaukums/room	platība m²/surface m²
C1.10	terase/terrace	11,94 m²
C1.11	auto nojume/carport	12,90 m²
C2.09	balkons/balcony	5,18 m²

Anmerkung:
 - alle Maßangaben als Rohmaße
 - BRH Angaben und Türhöhen ab OK FFB
 - Fertigteile gemäß Planung H+L vom 30.07.2007

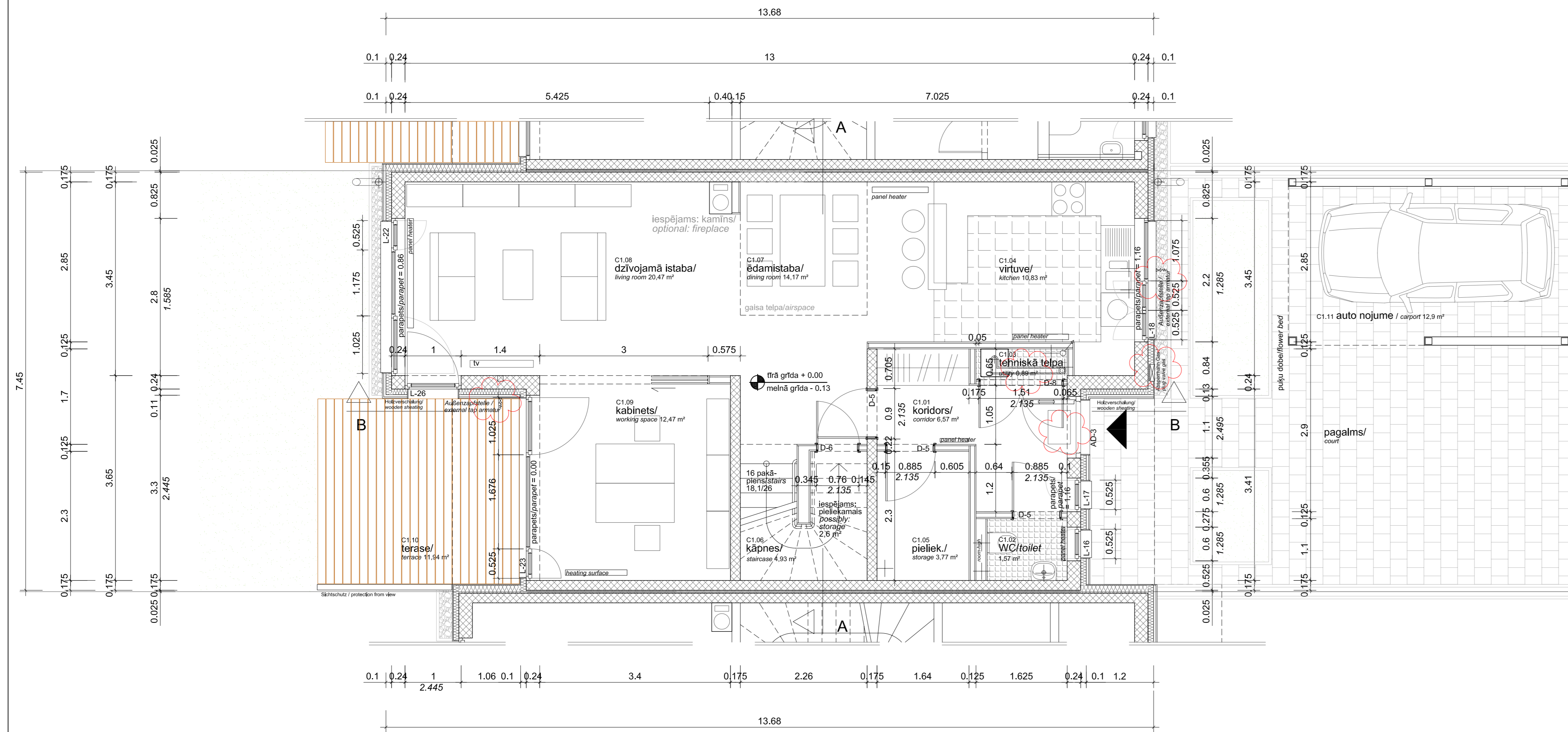
annotation:
 - all measures as rough dimensions
 - parapets and heights of doors from finished floor level
 - prefabricated elements according to planning of H+L from 2007/07/30



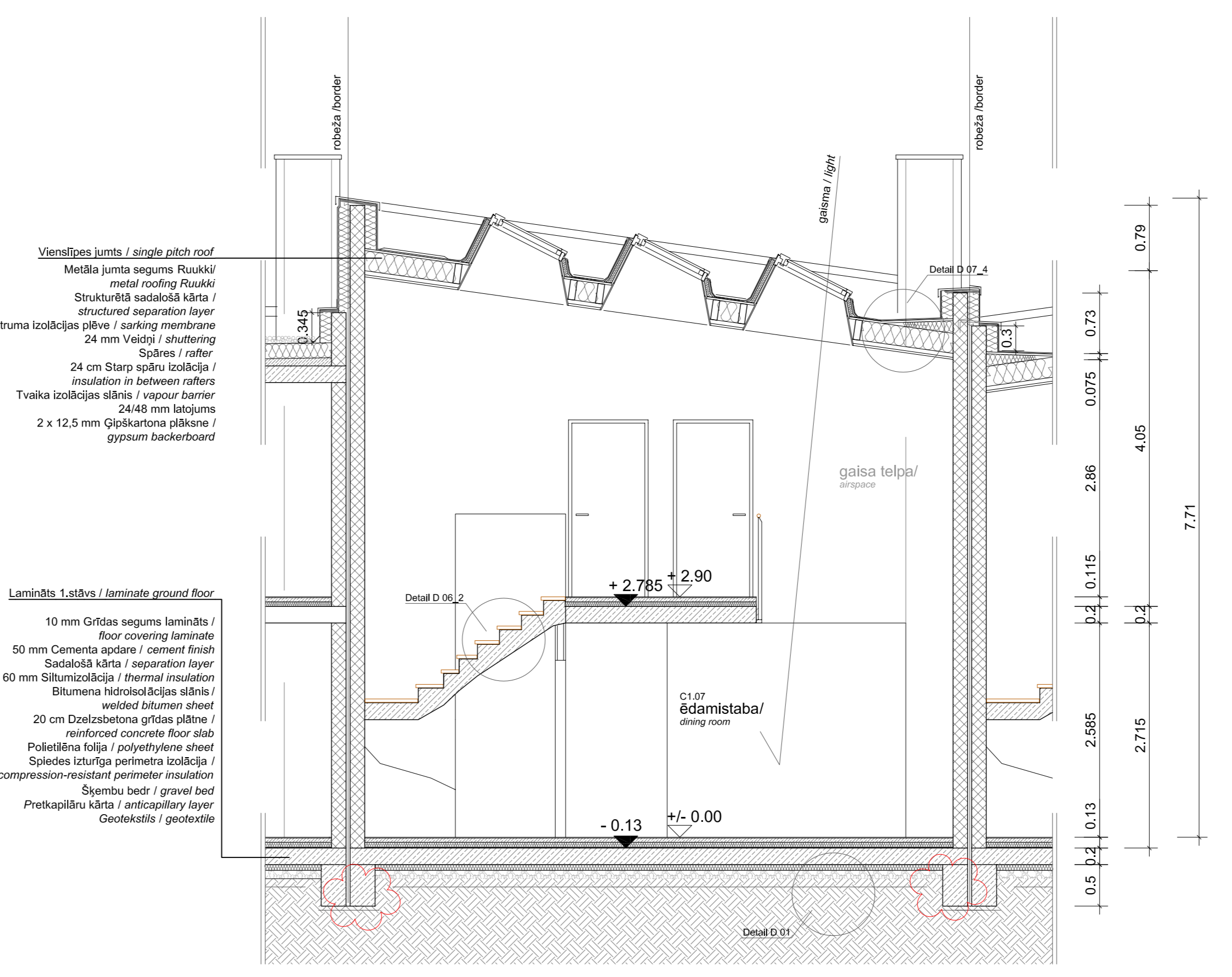
first floor s. 1:50



longitudinal section s. 1:50



ground floor s. 1:50



cross section s. 1:50

Datum/date	Änderung/modification	Index
23.05.07 (a1)	floor plans: adjustment window sizes and parapets, insulation, outside facilities	a
18.07.07 (a2)	floor plans: dimensioning windows, alteration front door	a
23.07.07 (a3)	floor plans: heaters sections: depth of frost apron	a
15.08.07 (b)	modification according to final planning of prefabricated elements	b
29.10.07 (b1)	modification of utility room	c
23.11.07 (c)	modification sauna/bath, ventilation, external stairs, door thresholds, bathrooms, modification of window and door sills according shop drawings by CWS, no attic	c

Silaraji Row Houses		INDEX c
Bauherr/building owner	Architekt/designer	
Datum/date	Best & Partner SIA	Datum/date

Projekt/project	Silaraji Row Houses	Plan Nr./plan no.	FP 03(1)
Maßstab/scale	1:50/ 1:100	Phase/phase	Ausführungsplanung/ final planning
Datum/date	23.11.2007		

BEST & PARTNER SIA
 ARCHITECTS Development Planning Consulting

Līdzstr. "Rīga" Territorija
 Mārupes Pag.
 Rīgas Raj.
 LV - 1053
 Tel: +371 668363
 Fax: +371 297597