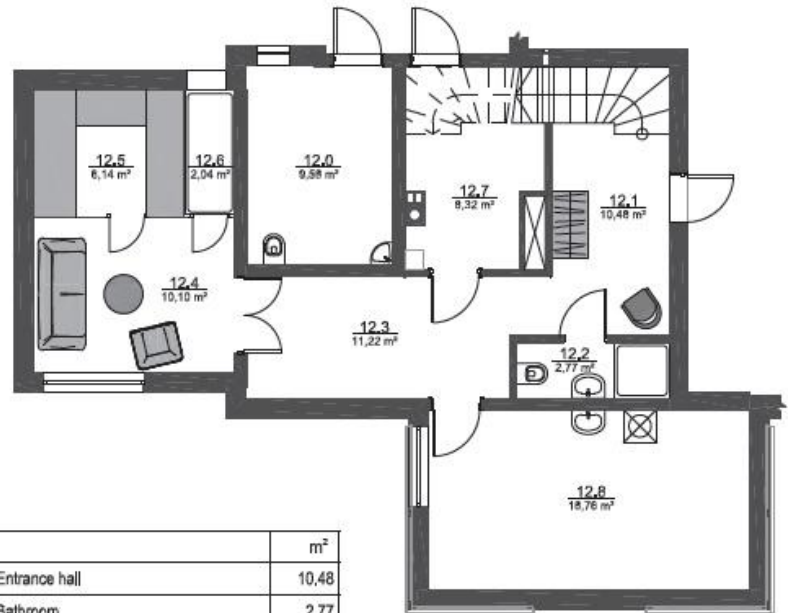


PRIVATE HOUSE / 7 rooms

0 floor

The two-storey wooden house (total area: 250 m²) is an example of historical wooden architecture of Dubulti with a spacious veranda and lucrative wooden decorations on a facade which have been carefully renovated.

A house is a detached living space with its own kitchen, guest room and glazed veranda on the first floor, several bedrooms on the second floor and a basement with a recreation space, a laundry room, a storage room, and a sauna. Interior of the house is harmonized with the exterior architecture. However house has modern windows with triple glass units thus ensuring better sound and heat insulation. House has an exit to the common underground parking.



| 0 floor | | m ² |
|---------|------------------|----------------|
| 12.1 | Entrance hall | 10,48 |
| 12.2 | Bathroom | 2,77 |
| 12.3 | Hall | 11,22 |
| 12.4 | Lounge | 10,10 |
| 12.5 | Sauna | 6,14 |
| 12.6 | Shower | 2,04 |
| 12.7 | Ventilation room | 8,32 |
| 12.8 | Storage | 18,76 |
| TOTAL: | | 69,83 |
| 12.0 | Technical room | 9,58 |

Cenifu Street

PRIVATE HOUSE / 7 rooms

1st floor

The two-storey wooden house (total area: 250 m²) is an example of historical wooden architecture of Dubulti with a spacious veranda and lucrative wooden decorations on a facade which have been carefully renovated.

A house is a detached living space with its own kitchen, guest room and glazed veranda on the first floor, several bedrooms on the second floor and a basement with a recreation space, a laundry room, a storage room, and a sauna. Interior of the house is harmonized with the exterior architecture. However house has modern windows with triple glass units thus ensuring better sound and heat insulation. House has an exit to the common underground parking.



| 1 st floor | | m ² |
|-----------------------|----------------------------|----------------|
| 12.9 | Hall | 8,60 |
| 12.10 | Kitchen | 17,36 |
| 12.11 | Bathroom | 2,71 |
| 12.12 | Living room | 27,91 |
| 12.13 | Entrance hall and wardrobe | 10,18 |
| 12.14 | Dining room | 18,36 |
| TOTAL: | | 85,12 |
| 12.15 | Terrace | 20,36 |
| TOTAL WITH TERRACE: | | 105,48 |

Scheme of lo

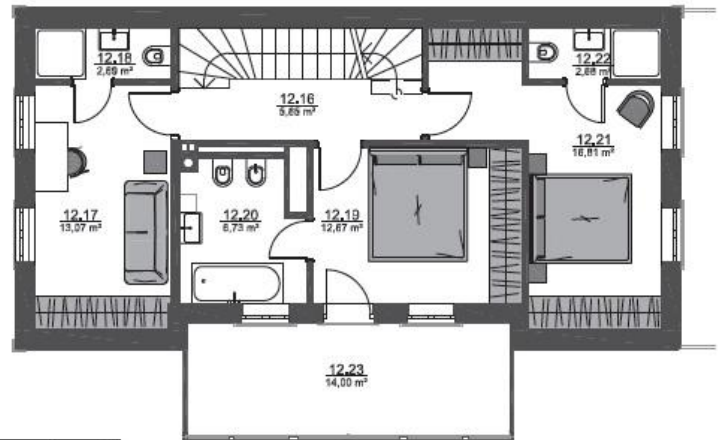
Cenifu Street

R. Biau

PRIVATE HOUSE / 7 rooms
2st floor

The two-storey wooden house (total area: 250 m²) is an example of historical wooden architecture of Dubulti with a spacious veranda and lucrative wooden decorations on a facade which have been carefully renovated.

A house is a detached living space with its own kitchen, guest room and glazed veranda on the first floor, several bedrooms on the second floor and a basement with a recreation space, a laundry room, a storage room, and a sauna. Interior of the house is harmonized with the exterior architecture. However house has modern windows with triple glass units thus ensuring better sound and heat insulation. House has an exit to the common underground parking.



| 2 nd floor | | m ² |
|----------------------------|----------|----------------|
| 12.16 | Hall | 5.65 |
| 12.17 | Bedroom | 13.07 |
| 12.18 | Bathroom | 2.69 |
| 12.19 | Bedroom | 12.67 |
| 12.20 | Bathroom | 6.73 |
| 12.21 | Bedroom | 16.81 |
| 12.22 | Bathroom | 2.68 |
| TOTAL: | | 60.30 |
| 12.23 | Balcony | 14.00 |
| TOTAL WITH BALCONY: | | 74.30 |

